

# collina

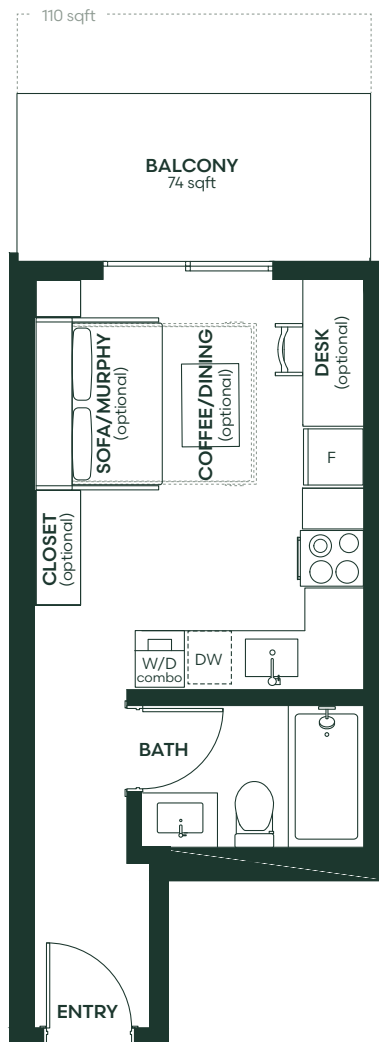
## A1

Studio + 1 Bath

INTERIOR  
303 sqft

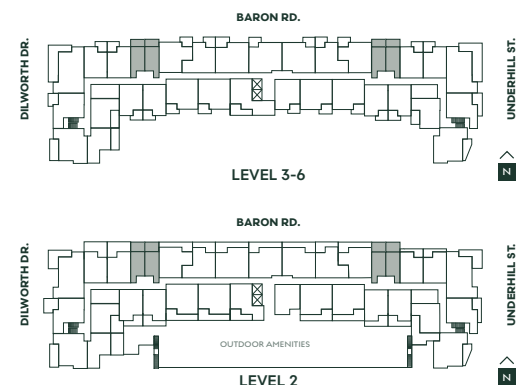
EXTERIOR  
74-110 sqft

TOTAL  
377-413 sqft



**Collina.ca**

The developer reserves the right to modify plans, specifications, features, materials and prices without notice and at the developers sole discretion. While we strive for accuracy, all measurements are approximate and are based on the architectural plans. Renderings are an artist's conception and are intended as a general reference only. The contents of this are not intended to solicit interest from any non-Canadian individual or entity as defined by the Prohibition on the Purchase of Residential Property by Non-Canadians Act. Please see disclosure statement for specific offering details. E&OE.



**ace** Project  
Marketing  
Group

**LORVAL**  
— DEVELOPMENTS —

# collina

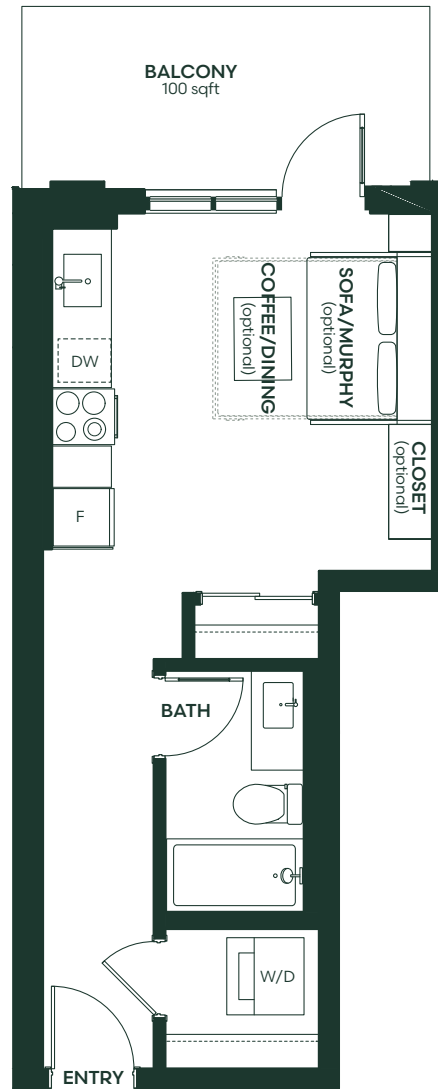
## A2

Studio + 1 Bath

INTERIOR  
429 sqft

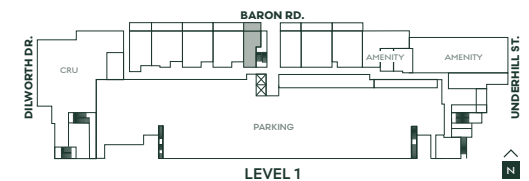
EXTERIOR  
100 sqft

TOTAL  
529 sqft



**Collina.ca**

The developer reserves the right to modify plans, specifications, features, materials and prices without notice and at the developers sole discretion. While we strive for accuracy, all measurements are approximate and are based on the architectural plans. Renderings are an artist's conception and are intended as a general reference only. The contents of this are not intended to solicit interest from any non-Canadian individual or entity as defined by the Prohibition on the Purchase of Residential Property by Non-Canadians Act. Please see disclosure statement for specific offering details. E&OE.



**ace** Project  
Marketing  
Group

**LORVAL**  
— DEVELOPMENTS —

# collina

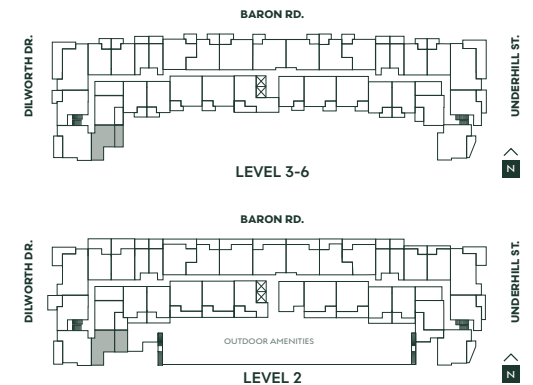
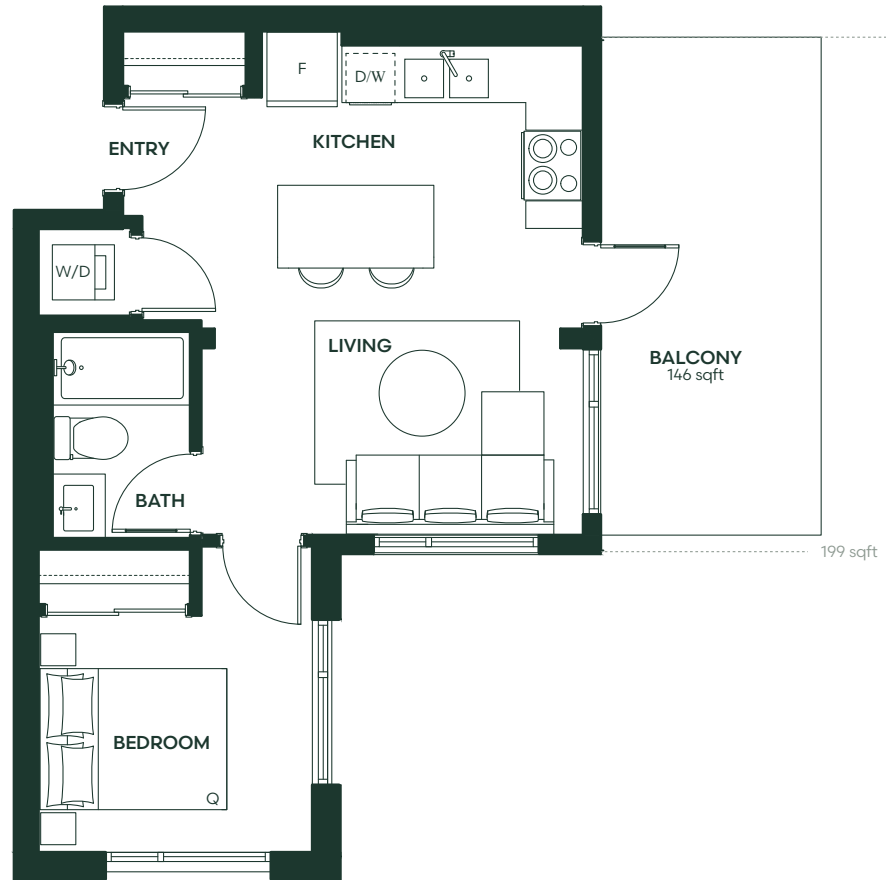
## B1

1 Bed + 1 Bath

INTERIOR  
506 sqft

EXTERIOR  
146-199 sqft

TOTAL  
652-705 sqft



**Collina.ca**

The developer reserves the right to modify plans, specifications, features, materials and prices without notice and at the developers sole discretion. While we strive for accuracy, all measurements are approximate and are based on the architectural plans. Renderings are an artist's conception and are intended as a general reference only. The contents of this are not intended to solicit interest from any non-Canadian individual or entity as defined by the Prohibition on the Purchase of Residential Property by Non-Canadians Act. Please see disclosure statement for specific offering details. E&OE.

**ace** Project  
Marketing  
Group

**LORVAL**  
— DEVELOPMENTS —

# collina

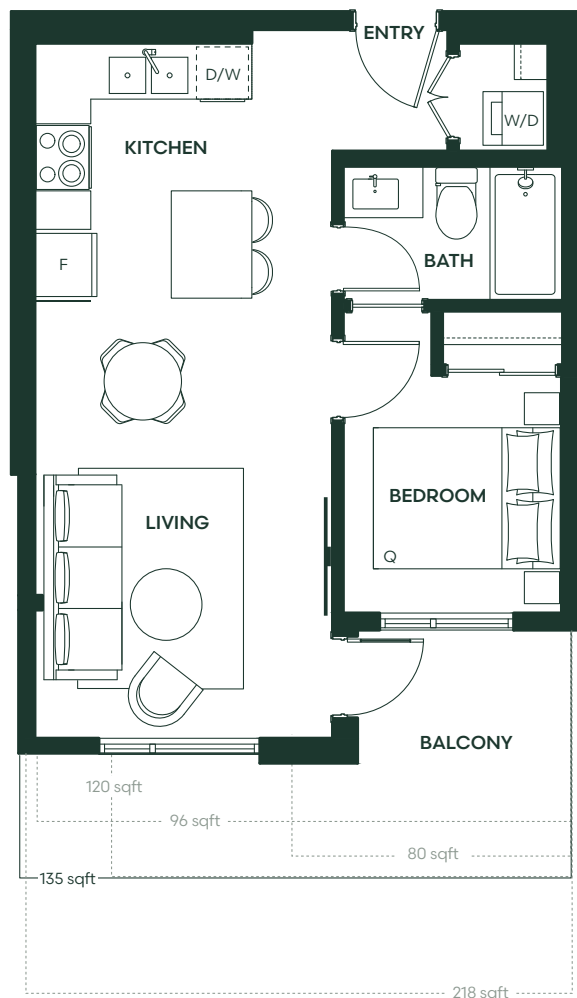
## B2

1 Bed + 1 Bath

**INTERIOR**  
531 sqft

**EXTERIOR**  
76-218 sqft

**TOTAL**  
607-749 sqft



80 sqft @units  
304, 305, 311, 312, 324, 325, 330, 331, 404, 405, 411, 412, 424, 425, 430, 431,  
504, 505, 511, 512, 524, 525, 530, 531, 604, 605, 611, 612, 624, 625, 630, 631

96 sqft @unit 225

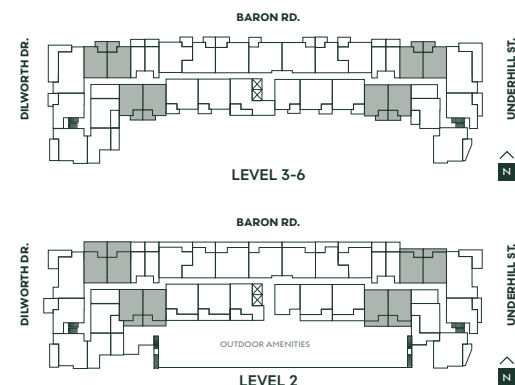
120 sqft @units 205, 224

135 sqft @units 204, 230, 231

218 sqft @units 211, 212

### Collina.ca

The developer reserves the right to modify plans, specifications, features, materials and prices without notice and at the developers sole discretion. While we strive for accuracy, all measurements are approximate and are based on the architectural plans. Renderings are an artist's conception and are intended as a general reference only. The contents of this are not intended to solicit interest from any non-Canadian individual or entity as defined by the Prohibition on the Purchase of Residential Property by Non-Canadians Act. Please see disclosure statement for specific offering details. E&OE.



**ace** Project  
Marketing  
Group

**LORVAL**  
— DEVELOPMENTS —

# collina

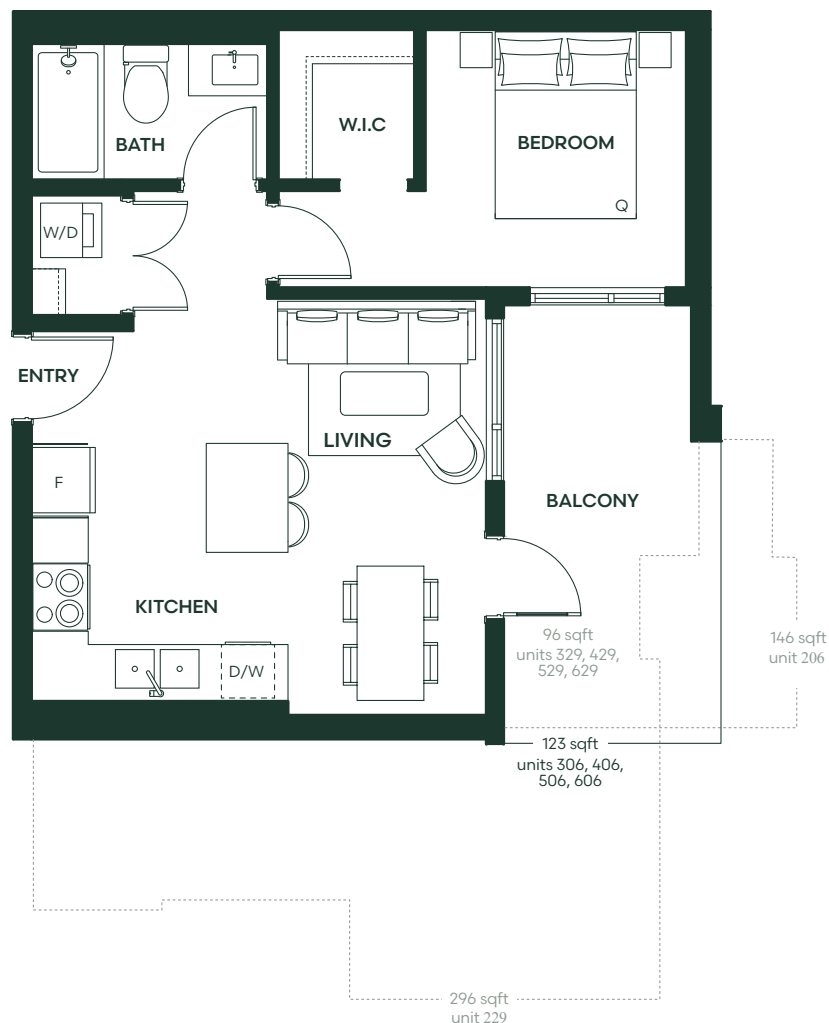
## B3

1 Bed + 1 Bath

INTERIOR  
552 sqft

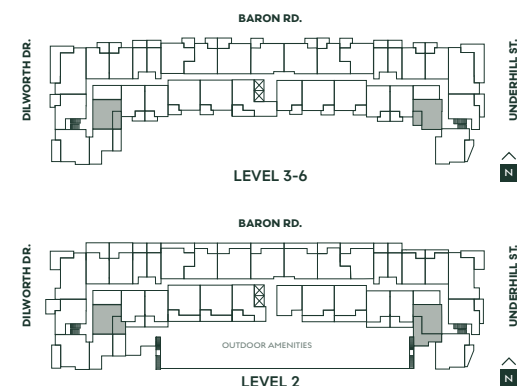
EXTERIOR  
96-296 sqft

TOTAL  
648-848 sqft



**Collina.ca**

The developer reserves the right to modify plans, specifications, features, materials and prices without notice and at the developers sole discretion. While we strive for accuracy, all measurements are approximate and are based on the architectural plans. Renderings are an artist's conception and are intended as a general reference only. The contents of this are not intended to solicit interest from any non-Canadian individual or entity as defined by the Prohibition on the Purchase of Residential Property by Non-Canadians Act. Please see disclosure statement for specific offering details. E&OE.



**ace** Project  
Marketing  
Group

**LORVAL**  
— DEVELOPMENTS —

# collina

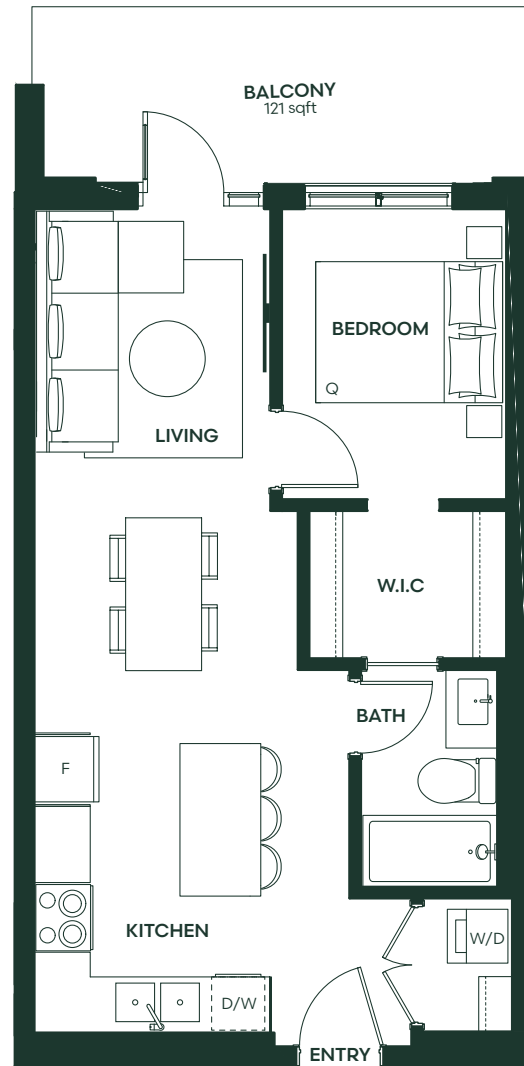
## B4

1 Bed + 1 Bath

INTERIOR  
613 sqft

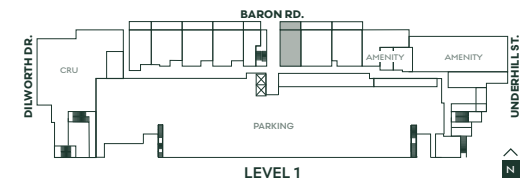
EXTERIOR  
121 sqft

TOTAL  
734 sqft



**Collina.ca**

The developer reserves the right to modify plans, specifications, features, materials and prices without notice and at the developers sole discretion. While we strive for accuracy, all measurements are approximate and are based on the architectural plans. Renderings are an artist's conception and are intended as a general reference only. The contents of this are not intended to solicit interest from any non-Canadian individual or entity as defined by the Prohibition on the Purchase of Residential Property by Non-Canadians Act. Please see disclosure statement for specific offering details. E&OE.



**ace** Project  
Marketing  
Group

**LORVAL**  
— DEVELOPMENTS —

# collina

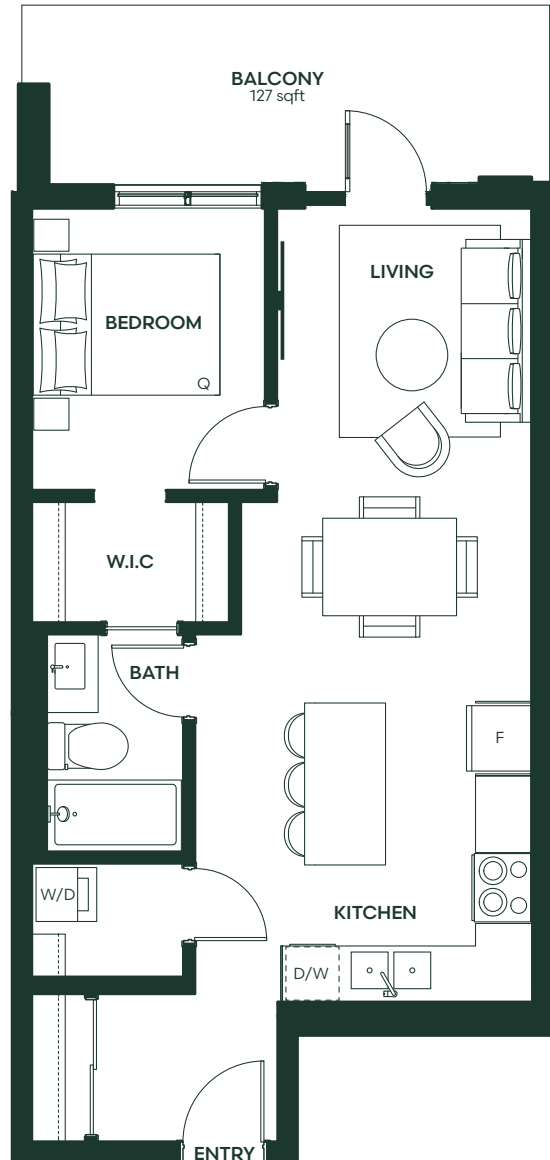
## B5

1 Bed + 1 Bath

INTERIOR  
671 sqft

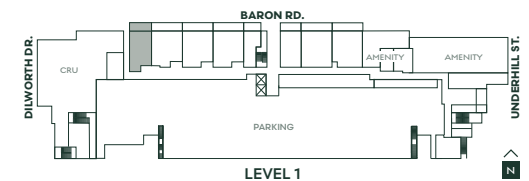
EXTERIOR  
127 sqft

TOTAL  
798 sqft



**Collina.ca**

The developer reserves the right to modify plans, specifications, features, materials and prices without notice and at the developers sole discretion. While we strive for accuracy, all measurements are approximate and are based on the architectural plans. Renderings are an artist's conception and are intended as a general reference only. The contents of this are not intended to solicit interest from any non-Canadian individual or entity as defined by the Prohibition on the Purchase of Residential Property by Non-Canadians Act. Please see disclosure statement for specific offering details. E&OE.



**ace** Project  
Marketing  
Group

**LORVAL**  
— DEVELOPMENTS —

# collina

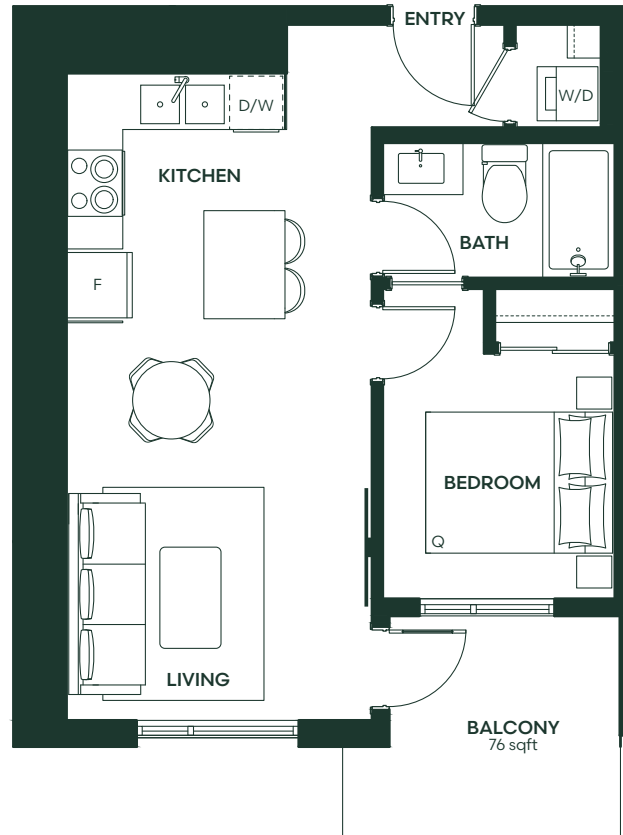
## B6

1 Bed + 1 Bath

INTERIOR  
564 sqft

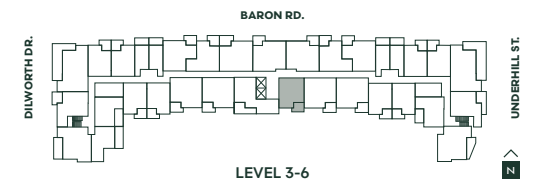
EXTERIOR  
76 sqft

TOTAL  
640 sqft



**Collina.ca**

The developer reserves the right to modify plans, specifications, features, materials and prices without notice and at the developers sole discretion. While we strive for accuracy, all measurements are approximate and are based on the architectural plans. Renderings are an artist's conception and are intended as a general reference only. The contents of this are not intended to solicit interest from any non-Canadian individual or entity as defined by the Prohibition on the Purchase of Residential Property by Non-Canadians Act. Please see disclosure statement for specific offering details. E&OE.



**ace** Project  
Marketing  
Group

**LORVAL**  
— DEVELOPMENTS —



# collina

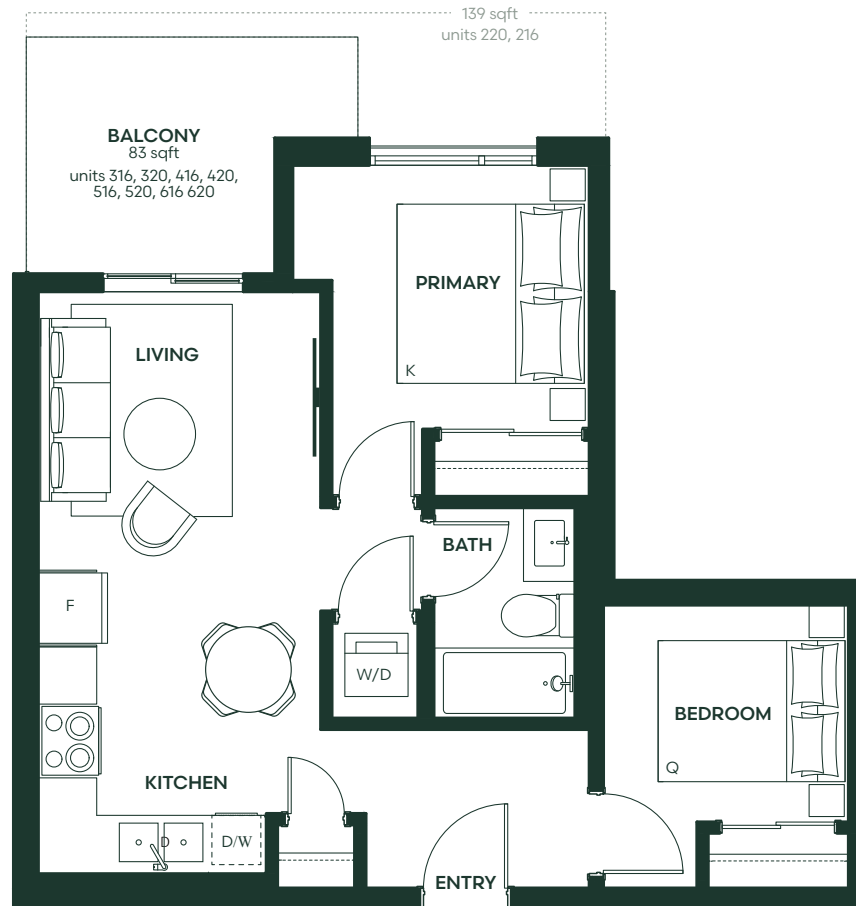
## C1

Jr. 2 Bed + 1 Bath

INTERIOR  
616 sqft

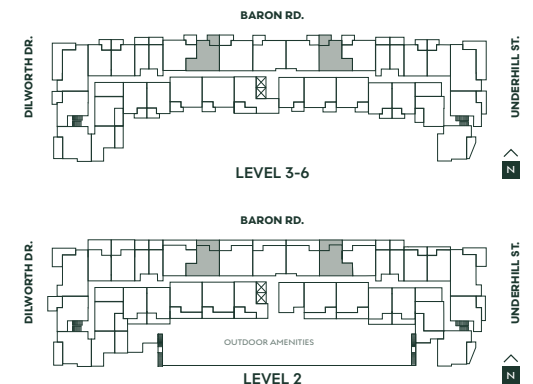
EXTERIOR  
81-139 sqft

TOTAL  
697-755 sqft



**Collina.ca**

The developer reserves the right to modify plans, specifications, features, materials and prices without notice and at the developers sole discretion. While we strive for accuracy, all measurements are approximate and are based on the architectural plans. Renderings are an artist's conception and are intended as a general reference only. The contents of this are not intended to solicit interest from any non-Canadian individual or entity as defined by the Prohibition on the Purchase of Residential Property by Non-Canadians Act. Please see disclosure statement for specific offering details. E&OE.



**ace** Project  
Marketing  
Group

**LORVAL**  
— DEVELOPMENTS —

# collina

## C2

Jr. 2 Bed + 1 Bath

INTERIOR  
624 sqft

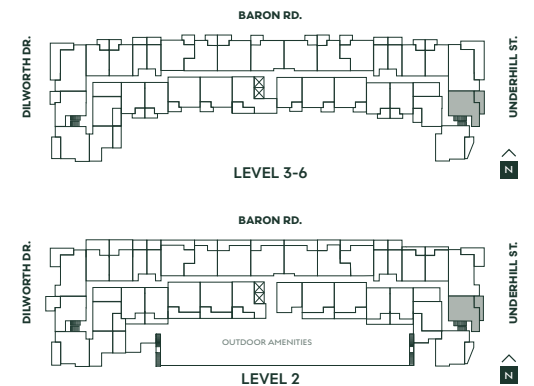
EXTERIOR  
105–115 sqft

TOTAL  
729–739 sqft



**Collina.ca**

The developer reserves the right to modify plans, specifications, features, materials and prices without notice and at the developers sole discretion. While we strive for accuracy, all measurements are approximate and are based on the architectural plans. Renderings are an artist's conception and are intended as a general reference only. The contents of this are not intended to solicit interest from any non-Canadian individual or entity as defined by the Prohibition on the Purchase of Residential Property by Non-Canadians Act. Please see disclosure statement for specific offering details. E&OE.



**ace** Project Marketing Group

**LORVAL** DEVELOPMENTS

# collina

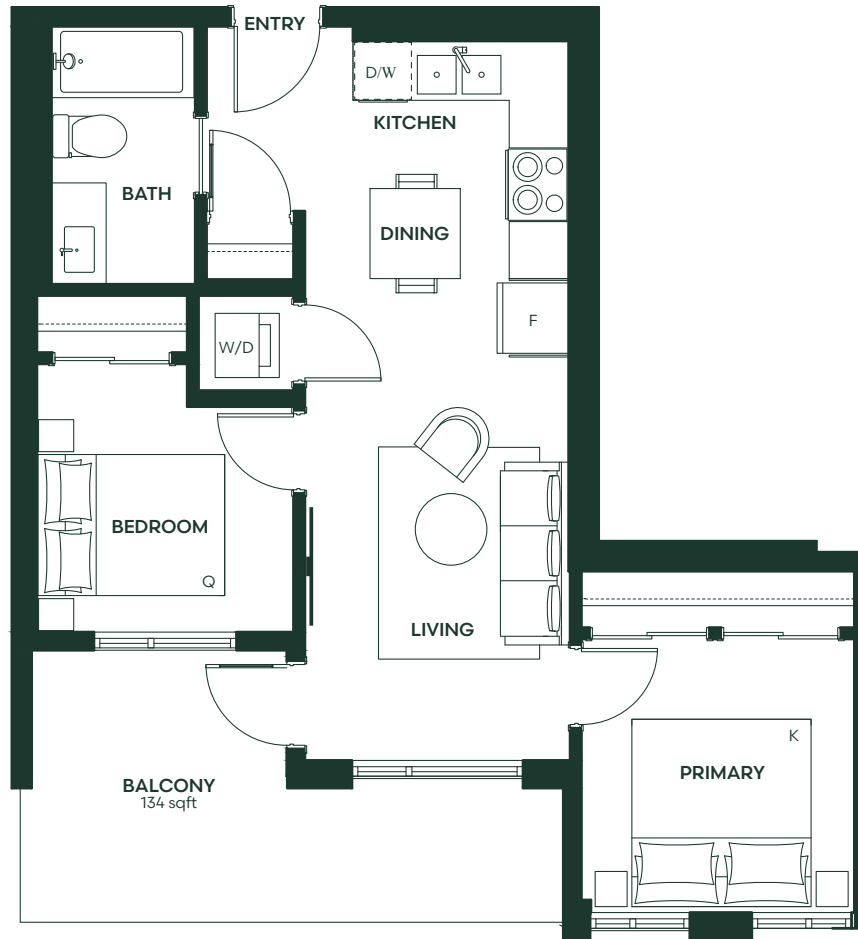
## D1

2 Bed + 1 Bath

INTERIOR  
637 sqft

EXTERIOR  
134 sqft

TOTAL  
771 sqft



### Collina.ca

The developer reserves the right to modify plans, specifications, features, materials and prices without notice and at the developers sole discretion. While we strive for accuracy, all measurements are approximate and are based on the architectural plans. Renderings are an artist's conception and are intended as a general reference only. The contents of this are not intended to solicit interest from any non-Canadian individual or entity as defined by the Prohibition on the Purchase of Residential Property by Non-Canadians Act. Please see disclosure statement for specific offering details. E&OE.



**ace** Project  
Marketing  
Group

**LORVAL**  
— DEVELOPMENTS —

# collina

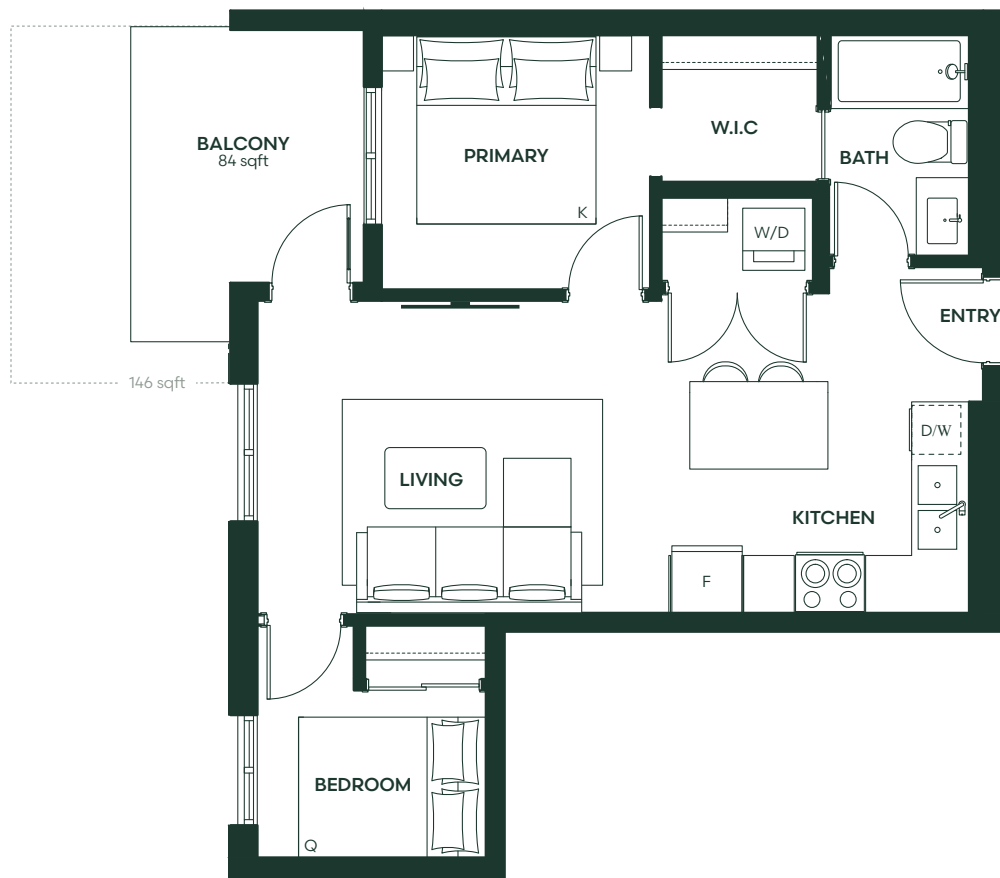
## D2

2 Bed + 1 Bath

INTERIOR  
645 sqft

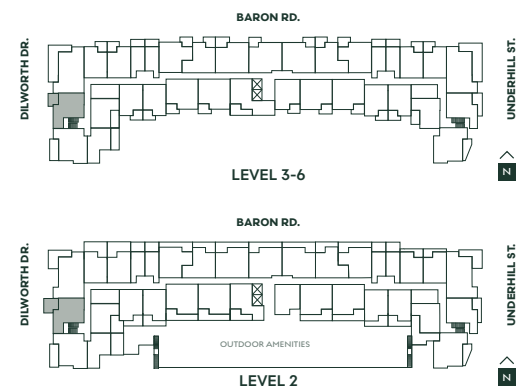
EXTERIOR  
84-146 sqft

TOTAL  
729-791 sqft



**Collina.ca**

The developer reserves the right to modify plans, specifications, features, materials and prices without notice and at the developers sole discretion. While we strive for accuracy, all measurements are approximate and are based on the architectural plans. Renderings are an artist's conception and are intended as a general reference only. The contents of this are not intended to solicit interest from any non-Canadian individual or entity as defined by the Prohibition on the Purchase of Residential Property by Non-Canadians Act. Please see disclosure statement for specific offering details. E&OE.



**ace** Project  
Marketing  
Group

**LORVAL**  
— DEVELOPMENTS —

# collina

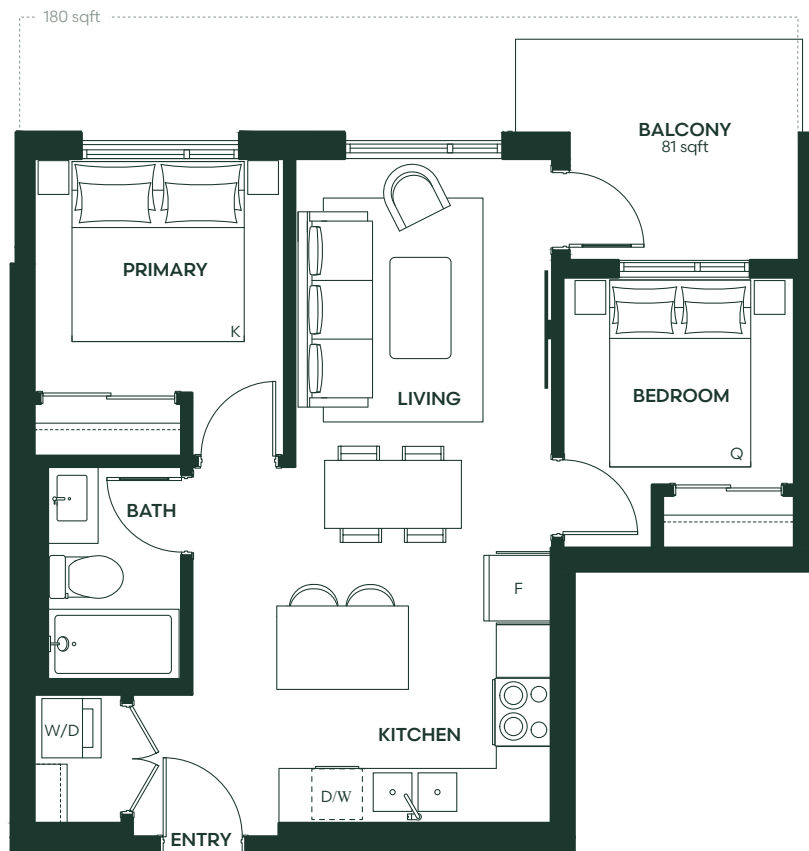
## D3

2 Bed + 1 Bath

INTERIOR  
658 sqft

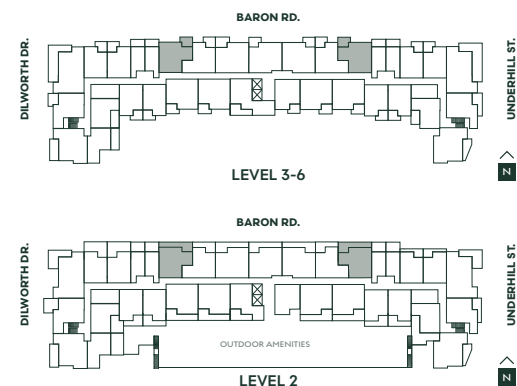
EXTERIOR  
81-180 sqft

TOTAL  
739-838 sqft



**Collina.ca**

The developer reserves the right to modify plans, specifications, features, materials and prices without notice and at the developers sole discretion. While we strive for accuracy, all measurements are approximate and are based on the architectural plans. Renderings are an artist's conception and are intended as a general reference only. The contents of this are not intended to solicit interest from any non-Canadian individual or entity as defined by the Prohibition on the Purchase of Residential Property by Non-Canadians Act. Please see disclosure statement for specific offering details. E&OE.



**ace** Project  
Marketing  
Group

**LORVAL**  
— DEVELOPMENTS —

# collina

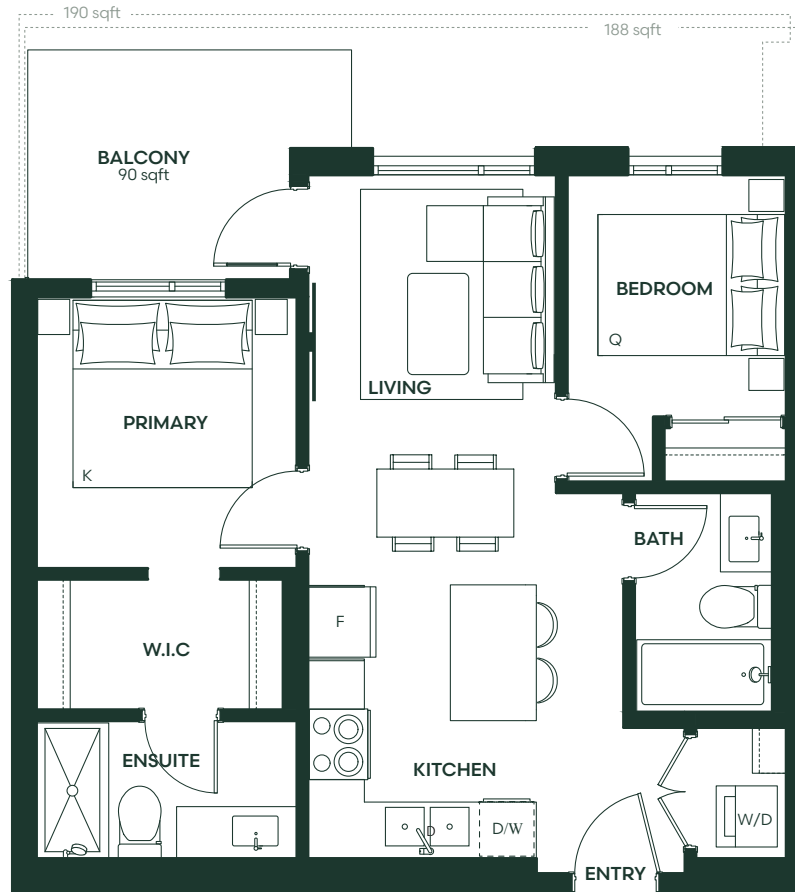
## E1

2 Bed + 2 Bath

INTERIOR  
725 sqft

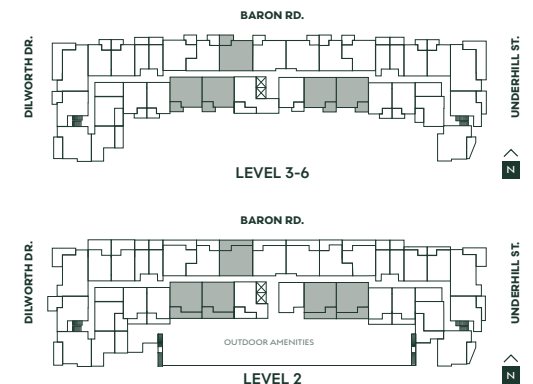
EXTERIOR  
88-191 sqft

TOTAL  
813-916 sqft



**Collina.ca**

The developer reserves the right to modify plans, specifications, features, materials and prices without notice and at the developers sole discretion. While we strive for accuracy, all measurements are approximate and are based on the architectural plans. Renderings are an artist's conception and are intended as a general reference only. The contents of this are not intended to solicit interest from any non-Canadian individual or entity as defined by the Prohibition on the Purchase of Residential Property by Non-Canadians Act. Please see disclosure statement for specific offering details. E&OE.



**ace** Project  
Marketing  
Group

**LORVAL**  
— DEVELOPMENTS —

# collina

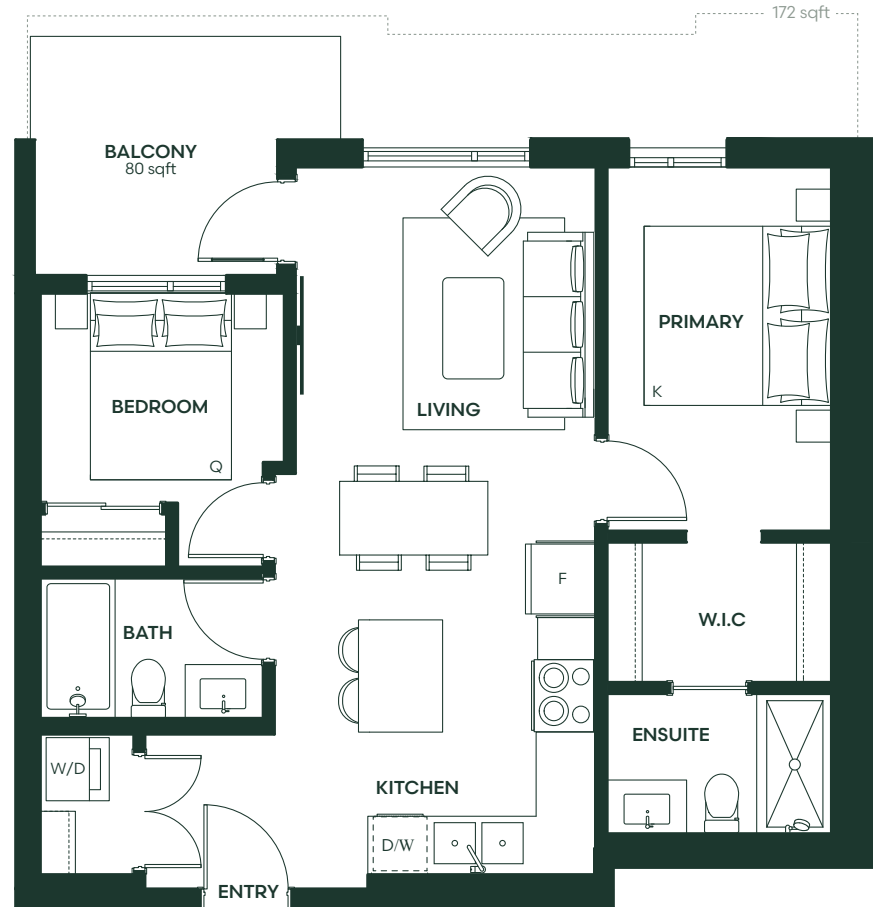
## E2

2 Bed + 2 Bath

INTERIOR  
746 sqft

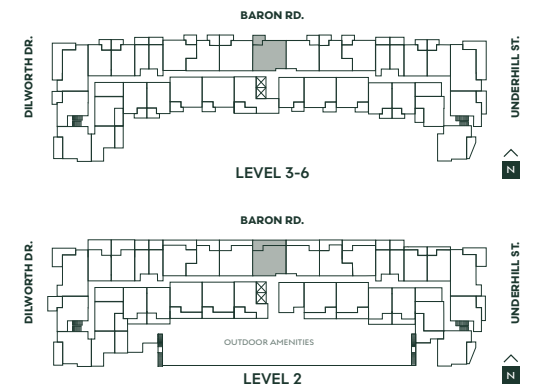
EXTERIOR  
80-172 sqft

TOTAL  
826-918 sqft



**Collina.ca**

The developer reserves the right to modify plans, specifications, features, materials and prices without notice and at the developers sole discretion. While we strive for accuracy, all measurements are approximate and are based on the architectural plans. Renderings are an artist's conception and are intended as a general reference only. The contents of this are not intended to solicit interest from any non-Canadian individual or entity as defined by the Prohibition on the Purchase of Residential Property by Non-Canadians Act. Please see disclosure statement for specific offering details. E&OE.



**ace** Project  
Marketing  
Group

**LORVAL**  
— DEVELOPMENTS —

# collina

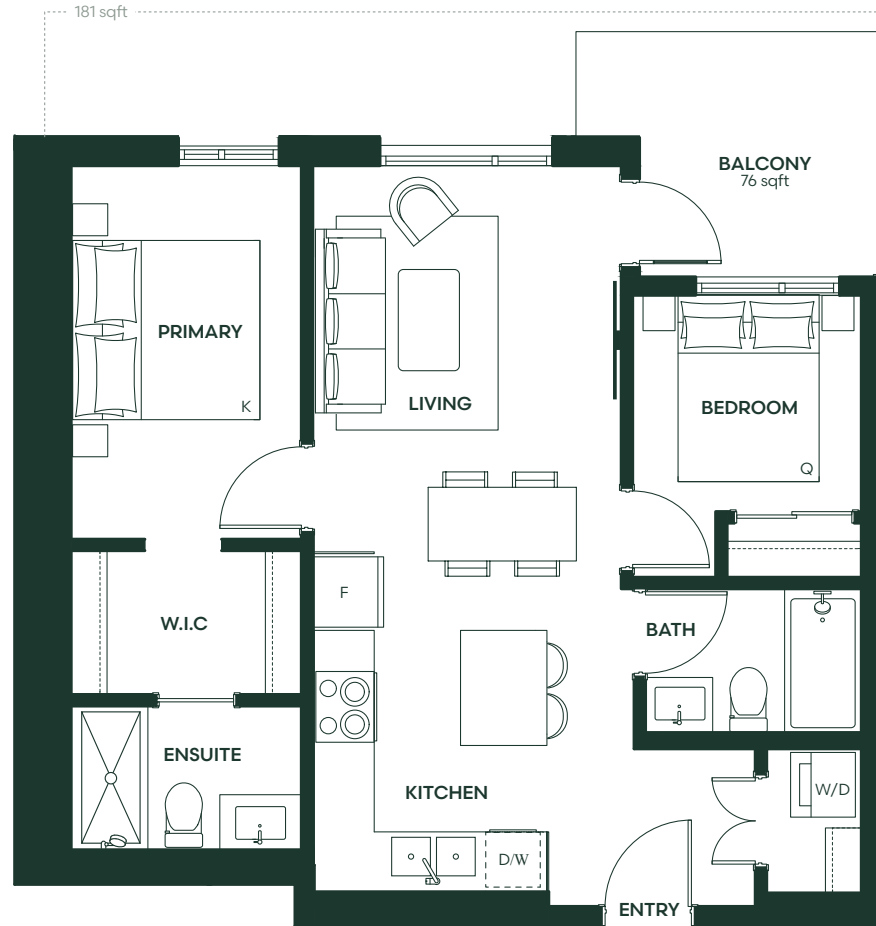
## E3

2 Bed + 2 Bath

INTERIOR  
729 sqft

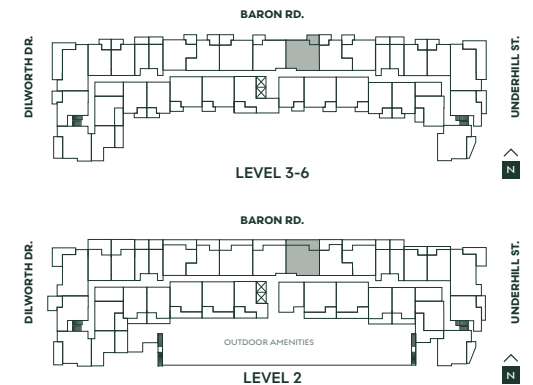
EXTERIOR  
76-181 sqft

TOTAL  
805-910 sqft



**Collina.ca**

The developer reserves the right to modify plans, specifications, features, materials and prices without notice and at the developers sole discretion. While we strive for accuracy, all measurements are approximate and are based on the architectural plans. Renderings are an artist's conception and are intended as a general reference only. The contents of this are not intended to solicit interest from any non-Canadian individual or entity as defined by the Prohibition on the Purchase of Residential Property by Non-Canadians Act. Please see disclosure statement for specific offering details. E&OE.



**ace** Project  
Marketing  
Group

**LORVAL**  
— DEVELOPMENTS —



# collina

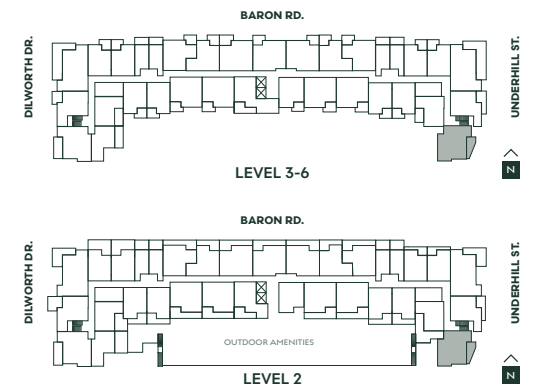
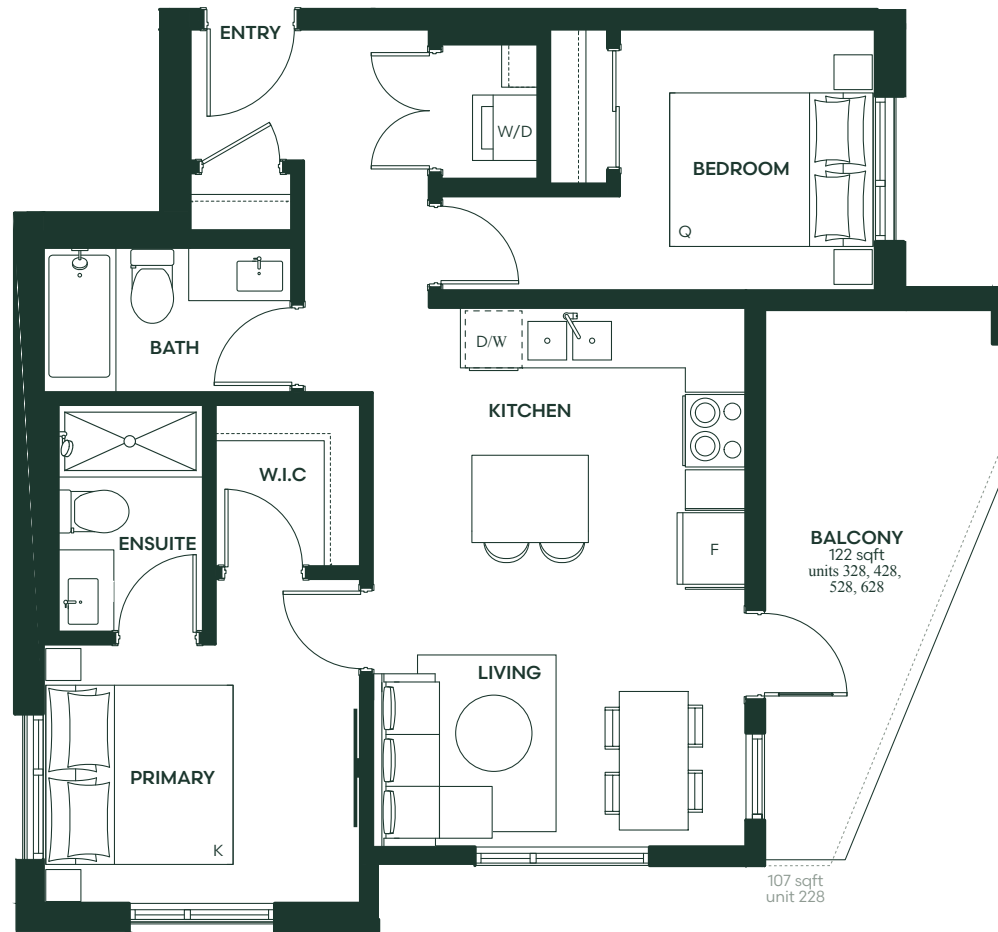
## E4

2 Bed + 2 Bath

INTERIOR  
773 sqft

EXTERIOR  
107-122 sqft

TOTAL  
880-895 sqft



**Collina.ca**

The developer reserves the right to modify plans, specifications, features, materials and prices without notice and at the developers sole discretion. While we strive for accuracy, all measurements are approximate and are based on the architectural plans. Renderings are an artist's conception and are intended as a general reference only. The contents of this are not intended to solicit interest from any non-Canadian individual or entity as defined by the Prohibition on the Purchase of Residential Property by Non-Canadians Act. Please see disclosure statement for specific offering details. E&OE.

**ace** Project  
Marketing  
Group

**LORVAL**  
— DEVELOPMENTS —

# collina

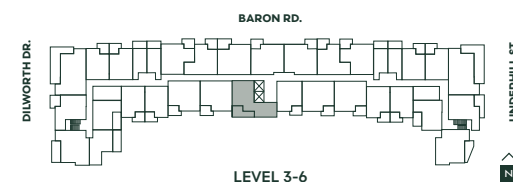
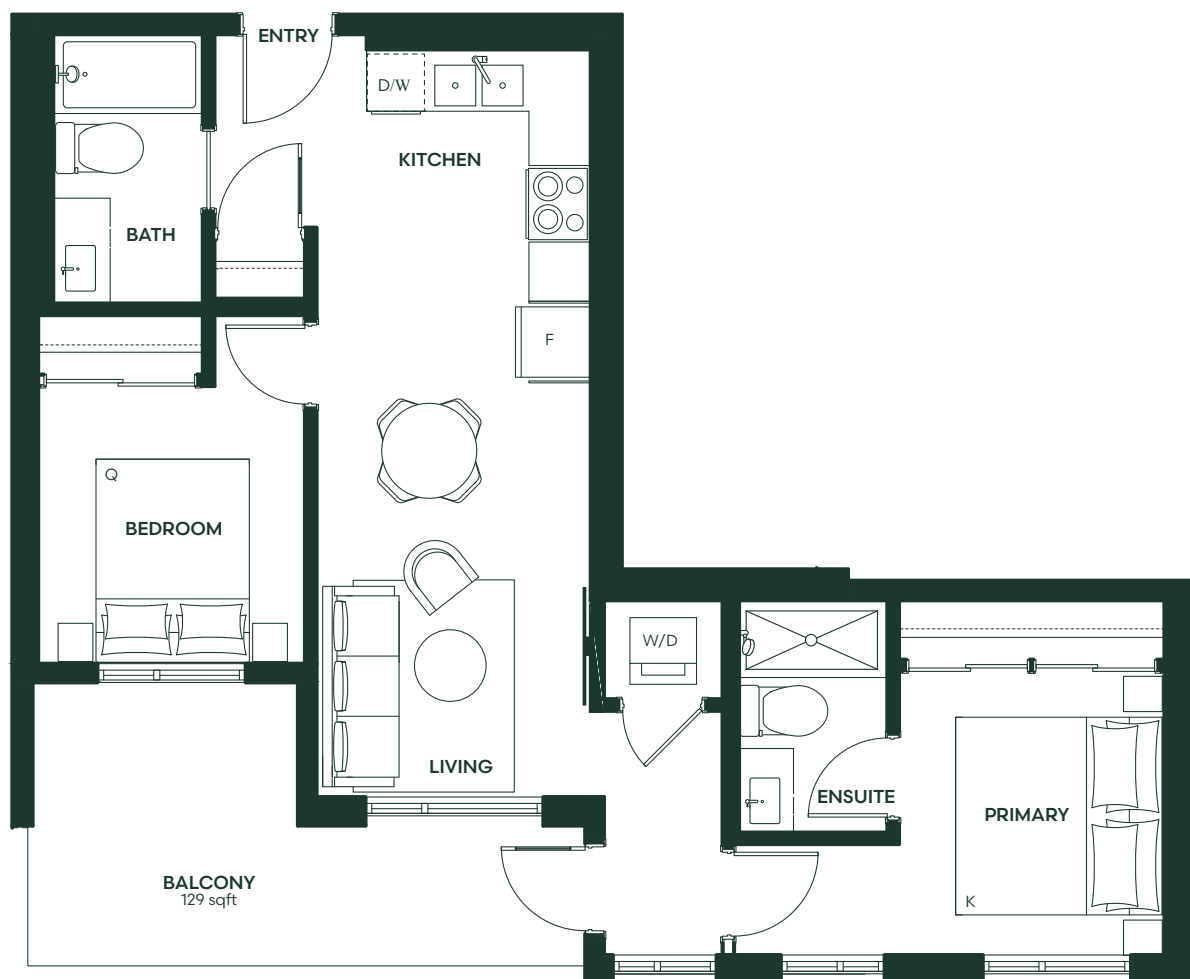
## E5

2 Bed + 2 Bath

INTERIOR  
769 sqft

EXTERIOR  
129 sqft

TOTAL  
898 sqft



**Collina.ca**

The developer reserves the right to modify plans, specifications, features, materials and prices without notice and at the developers sole discretion. While we strive for accuracy, all measurements are approximate and are based on the architectural plans. Renderings are an artist's conception and are intended as a general reference only. The contents of this are not intended to solicit interest from any non-Canadian individual or entity as defined by the Prohibition on the Purchase of Residential Property by Non-Canadians Act. Please see disclosure statement for specific offering details. E&OE.

**ace** Project  
Marketing  
Group

**LORVAL**  
— DEVELOPMENTS —

# collina

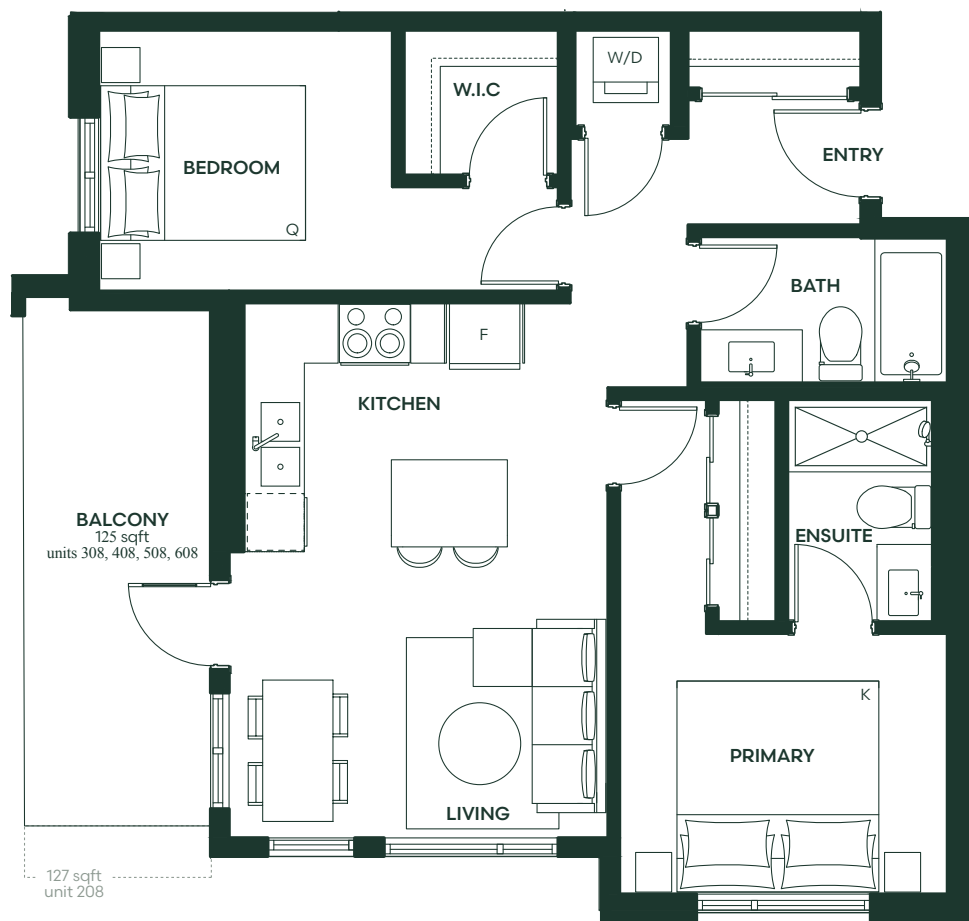
## E6

2 Bed + 2 Bath

INTERIOR  
796 sqft

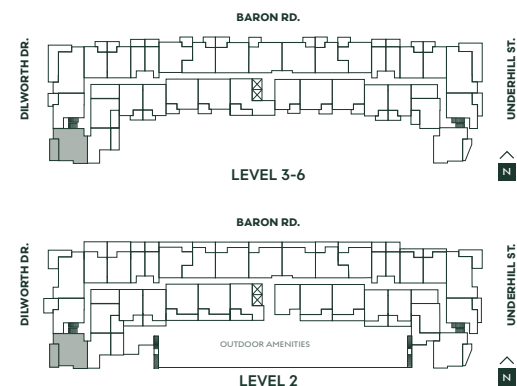
EXTERIOR  
125-127 sqft

TOTAL  
921-923 sqft



**Collina.ca**

The developer reserves the right to modify plans, specifications, features, materials and prices without notice and at the developers sole discretion. While we strive for accuracy, all measurements are approximate and are based on the architectural plans. Renderings are an artist's conception and are intended as a general reference only. The contents of this are not intended to solicit interest from any non-Canadian individual or entity as defined by the Prohibition on the Purchase of Residential Property by Non-Canadians Act. Please see disclosure statement for specific offering details. E&OE.



**ace** Project  
Marketing  
Group

**LORVAL**  
— DEVELOPMENTS —

# collina

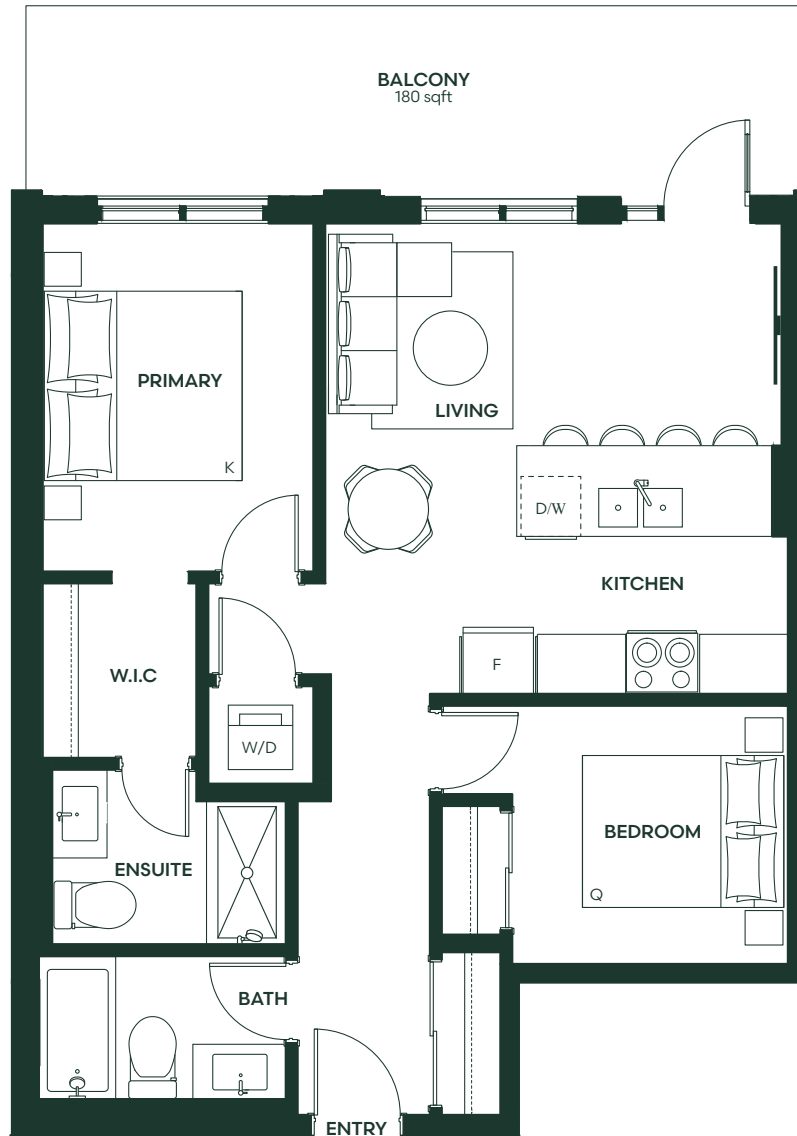
## E7

2 Bed + 2 Bath

INTERIOR  
828 sqft

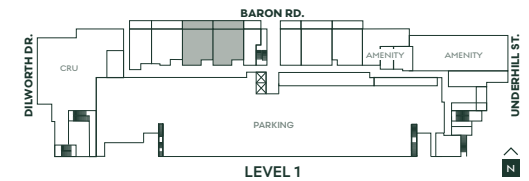
EXTERIOR  
180 sqft

TOTAL  
1008 sqft



**Collina.ca**

The developer reserves the right to modify plans, specifications, features, materials and prices without notice and at the developers sole discretion. While we strive for accuracy, all measurements are approximate and are based on the architectural plans. Renderings are an artist's conception and are intended as a general reference only. The contents of this are not intended to solicit interest from any non-Canadian individual or entity as defined by the Prohibition on the Purchase of Residential Property by Non-Canadians Act. Please see disclosure statement for specific offering details. E&OE.



**ace** Project  
Marketing  
Group

**LORVAL**  
— DEVELOPMENTS —

# collina

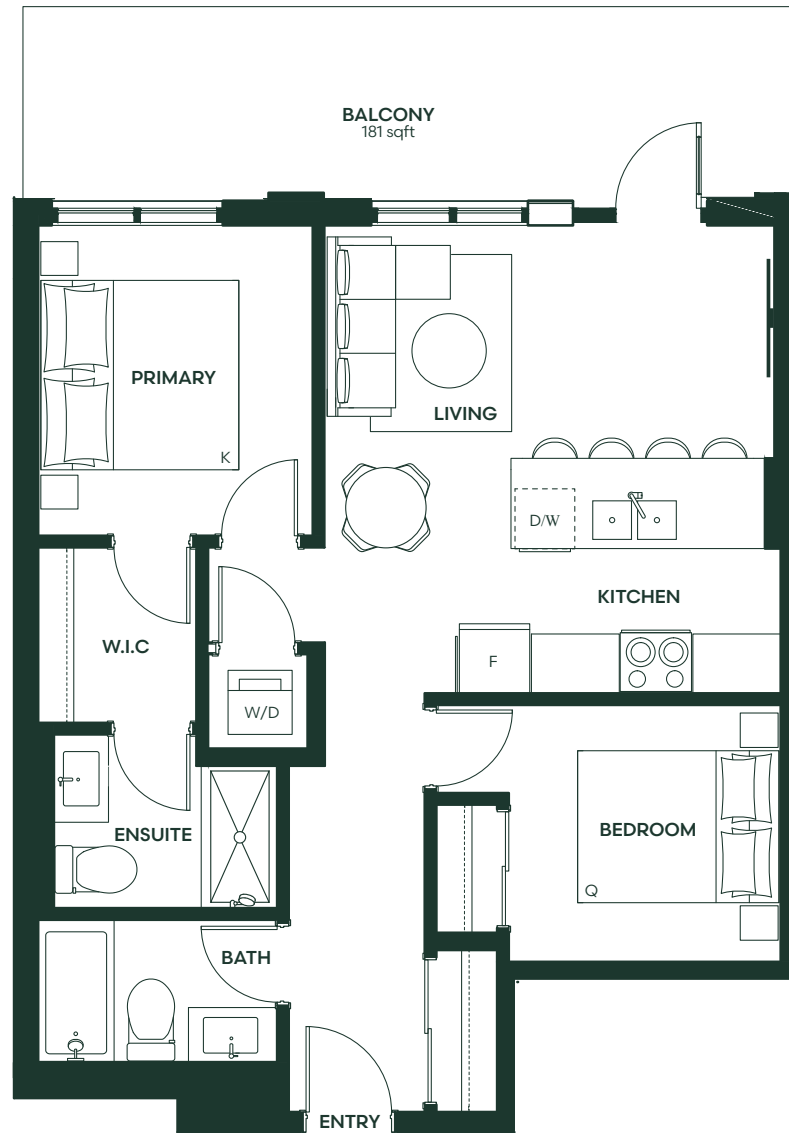
## E8

2 Bed + 2 Bath

INTERIOR  
818 sqft

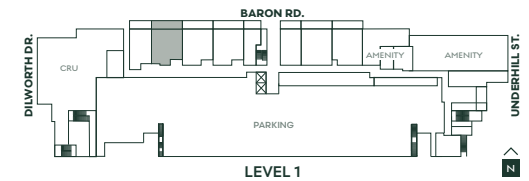
EXTERIOR  
181 sqft

TOTAL  
999 sqft



**Collina.ca**

The developer reserves the right to modify plans, specifications, features, materials and prices without notice and at the developers sole discretion. While we strive for accuracy, all measurements are approximate and are based on the architectural plans. Renderings are an artist's conception and are intended as a general reference only. The contents of this are not intended to solicit interest from any non-Canadian individual or entity as defined by the Prohibition on the Purchase of Residential Property by Non-Canadians Act. Please see disclosure statement for specific offering details. E&OE.



**ace** Project  
Marketing  
Group

**LORVAL**  
— DEVELOPMENTS —

# collina

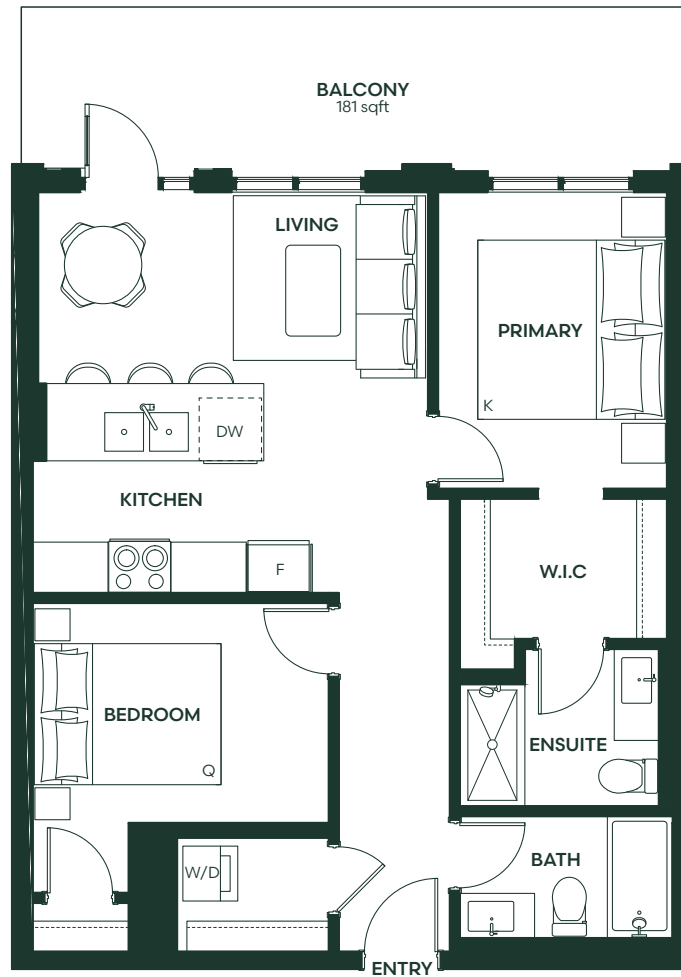
## E9

2 Bed + 2 Bath

INTERIOR  
881 sqft

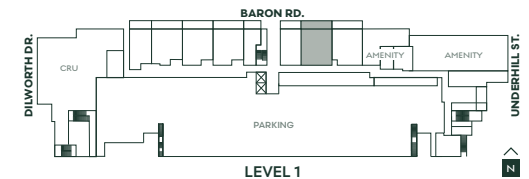
EXTERIOR  
181 sqft

TOTAL  
999 sqft



**Collina.ca**

The developer reserves the right to modify plans, specifications, features, materials and prices without notice and at the developers sole discretion. While we strive for accuracy, all measurements are approximate and are based on the architectural plans. Renderings are an artist's conception and are intended as a general reference only. The contents of this are not intended to solicit interest from any non-Canadian individual or entity as defined by the Prohibition on the Purchase of Residential Property by Non-Canadians Act. Please see disclosure statement for specific offering details. E&OE.



**ace** Project  
Marketing  
Group

**LORVAL**  
— DEVELOPMENTS —

# collina

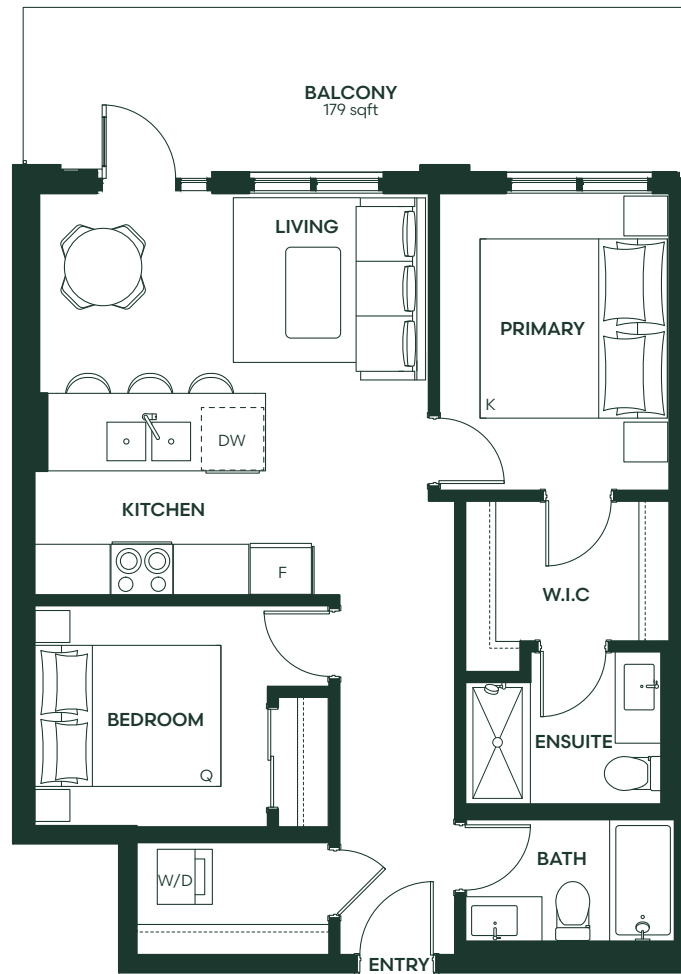
## E10

2 Bed + 2 Bath

INTERIOR  
864 sqft

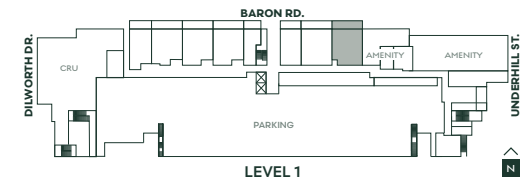
EXTERIOR  
179 sqft

TOTAL  
1043 sqft



**Collina.ca**

The developer reserves the right to modify plans, specifications, features, materials and prices without notice and at the developers sole discretion. While we strive for accuracy, all measurements are approximate and are based on the architectural plans. Renderings are an artist's conception and are intended as a general reference only. The contents of this are not intended to solicit interest from any non-Canadian individual or entity as defined by the Prohibition on the Purchase of Residential Property by Non-Canadians Act. Please see disclosure statement for specific offering details. E&OE.



**ace** Project  
Marketing  
Group

**LORVAL**  
— DEVELOPMENTS —

# collina

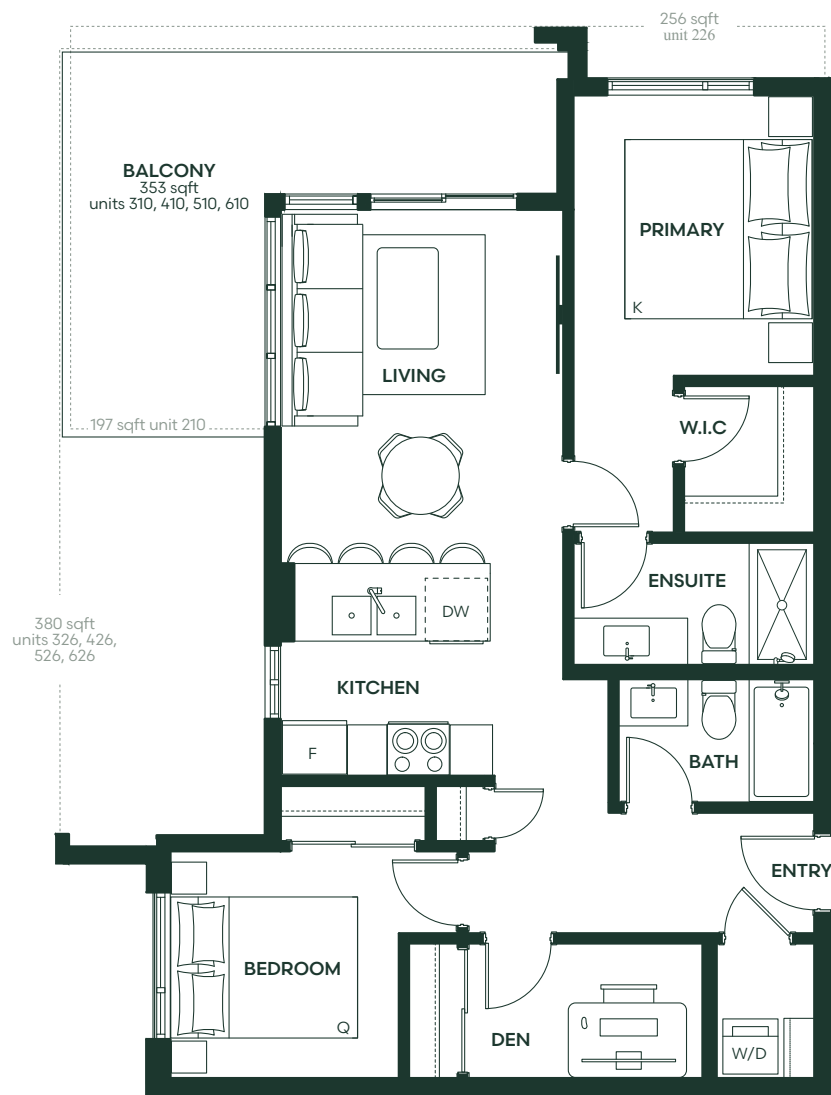
## F1

2 Bed + Flex  
2 Bath

INTERIOR  
930 sqft

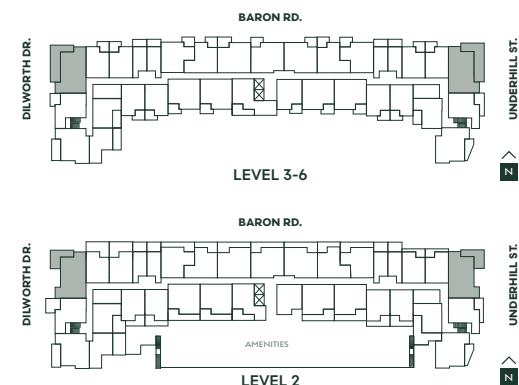
EXTERIOR  
197–380 sqft

TOTAL  
1127–1310 sqft



**Collina.ca**

The developer reserves the right to modify plans, specifications, features, materials and prices without notice and at the developers sole discretion. While we strive for accuracy, all measurements are approximate and are based on the architectural plans. Renderings are an artist's conception and are intended as a general reference only. The contents of this are not intended to solicit interest from any non-Canadian individual or entity as defined by the Prohibition on the Purchase of Residential Property by Non-Canadians Act. Please see disclosure statement for specific offering details. E&OE.



**ace** Project  
Marketing  
Group

**LORVAL**  
— DEVELOPMENTS —